



MACQUARIE ASSET MANAGEMENT

Walter Scott Global Equity Fund

Macquarie Professional Series

Seeking exposure to quality global companies with strong growth characteristics

Walter Scott scours global markets to find what they believe are the world's best companies, capable of generating sustained wealth over the long term. Walter Scott's thorough research program and team-based approach ensure that only their best stock ideas make their way into the portfolio.



A focus on quality growth

Through a long-term investment lens



The power of many minds

Driving meticulous, proprietary research



Focus on defensive investing

With the potential for strong returns over a full market cycle

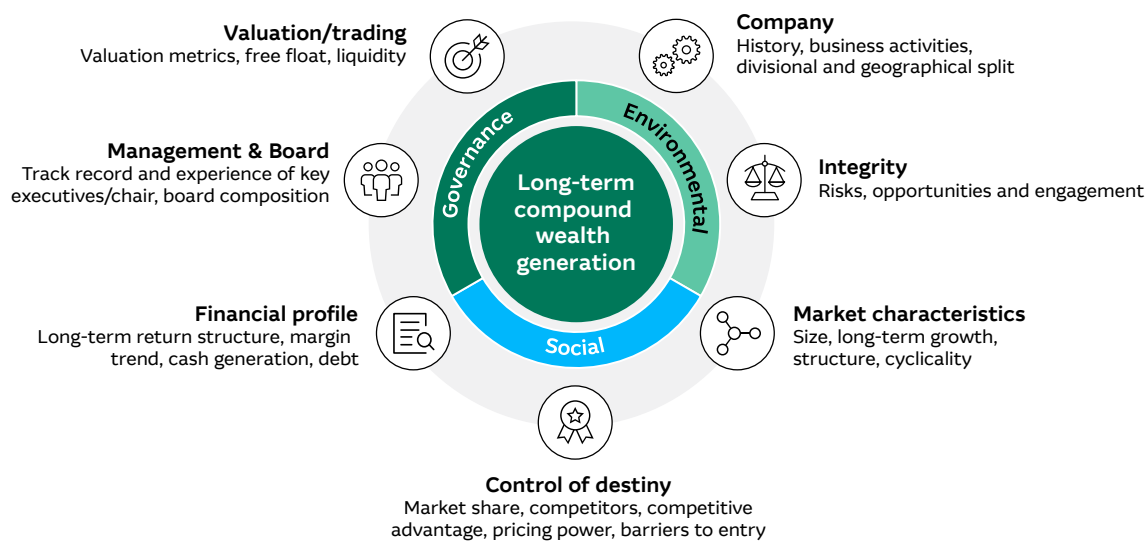
A focus on quality growth

Walter Scott’s investment approach is centred around finding high quality global companies with strong growth characteristics.

As fundamental, bottom-up stock pickers, the team focuses on companies they believe are **profitable**, have a sound ability to generate **cash**, and have **strong balance sheets** and **robust governance structures**. Stock characteristics such as these tend to shine out particularly during tough market conditions.

This bias towards growth and quality stocks is evidenced by the Fund’s consistent overweight to growth and quality characteristics, compared to the Benchmark¹.

Seven areas of investigation



Source: Walter Scott.

¹ Benchmark is the MSCI World ex Australia Index, in \$A unhedged with net dividends reinvested.

The power of many minds

In selecting companies, Walter Scott employs a low turnover, ‘buy-and-hold’ approach, which has remained unchanged since the firm was founded in 1983. Walter Scott believes that this approach is the best way of generating wealth for clients, as a long-term time horizon allows companies to realise their growth potential and compound shareholder returns.

This approach requires Walter Scott’s experienced research team to understand whether a business is likely to be successful over the next five to ten years. To do this, the team travel globally to meet directly with company management, and to talk to suppliers, customers and employees to form a first-hand view of a company’s potential for long-term success.

The investment decision

Following the thorough research program, a team-based approach aims to ensure only the best stocks make their way into the Fund.



Team-based discussion and debate



Unanimous decision for purchase, single dissenter for sale



Walter Scott Global Equity Fund

A concentrated portfolio of 40-60 leading global companies

Walter Scott Global Equity Fund

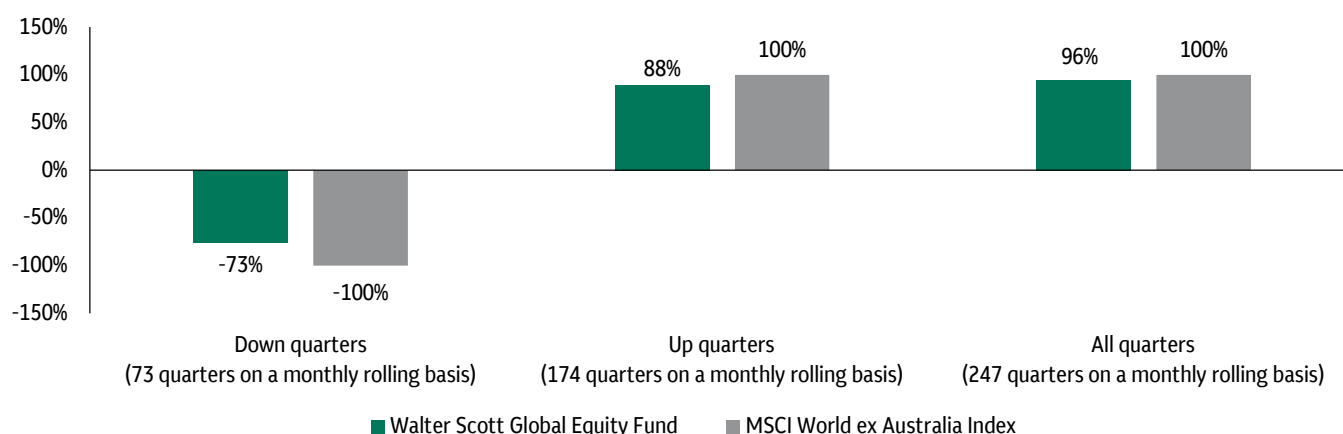
Macquarie Professional Series

Defensive investing

Walter Scott's focus on quality companies and long-term approach to investing has historically helped the Fund to protect investor portfolios in periods when equity markets have fallen.¹ This is illustrated in the chart below where the three grey bars represent the aggregate return of the Benchmark² in those periods when it rose, those when it fell, and in all periods, expressed as a base of 100.

- In periods when the Benchmark has fallen, the Fund declined by only **73%** of the Benchmark's loss.
- In periods when the Benchmark has risen, the Fund captured **88%** of the Benchmark's gain.

Upside and downside capture in rolling 3-month periods for the Benchmark



Past performance is not a reliable indicator of future performance. Current performance information for the quoted and unquoted classes of units in the Fund is available on our website at macquarie.com/mam/au-performance. Source: Macquarie and MSCI. Capture ratios are based on the average return of the unquoted class of units in the Fund divided by average Benchmark return for separate periods where the Benchmark return was negative and positive. Returns used were rolling 3-month returns for the period 31 March 2005 to 31 December 2025, net of fees. The information above is presented for illustrative purposes only. The performance of the quoted class of units in the Fund may differ slightly from the performance of the unquoted class. 1 It is important to note that share-markets can be volatile and have the potential to fall by large amounts over short periods of time. 2 The Benchmark for the Fund is the MSCI World ex Australia Index, in \$A unhedged with net dividends reinvested.

About Walter Scott

Walter Scott & Partners Limited (**Walter Scott**) is a global investment manager established in 1983 in Edinburgh, Scotland. Walter Scott has a wealth of experience in global equity investing and is a classical, fundamental and long-term growth manager. The team takes an unconstrained approach to investing across geographies and sectors, seeking to identify companies capable of generating long-term wealth.

Target investors

The Fund is designed for consumers who:

- are seeking capital growth and income distribution
- are intending to use the Fund as a core component, minor allocation or satellite allocation within a portfolio
- have a minimum investment timeframe of seven years
- have a high or very high risk/return profile for that portion of their investment portfolio, and
- require the ability to have access to capital within one week of request.

The Target Market Determination (TMD), available at macquarie.com/mam/tmd, includes a description of the class of consumers for whom the Fund is likely to be consistent with their objectives, financial situation and needs.

*Sale proceeds, for units in exchange traded funds admitted to trading on the ASX, are normally available two ASX trading days after the sale date on the ASX.

Walter Scott Global Equity Fund

Macquarie Professional Series

Risks

All investments carry risk. Different investments carry different levels of risk, depending on the investment strategy and the underlying assets. Generally, the higher the potential return of an investment, the greater the risk (including the potential for loss and unit price variability over the short term). The risks of investing in this Fund include:

Investment risk: The Fund has exposure to share markets. The risk of an investment in the Fund is higher than an investment in a typical bank account or fixed income investment. Amounts distributed to unitholders may fluctuate, as may the Fund's unit price, by material amounts over short periods.

Market risk: The investments that the Fund has exposure to are likely to have a broad correlation with share markets in general. Share markets can be volatile and have the potential to fall by large amounts over short periods of time. Poor performance or losses in domestic and/or global share markets are likely to negatively impact the overall performance of the Fund.

International and emerging market risk: The Fund has exposure to a range of international economies, including emerging economies. Global and country specific macroeconomic factors may impact the investments that the Fund has exposure to. Governments may intervene in markets, industries, and companies; may alter tax and legal regimes; and may act to prevent or limit the repatriation of foreign capital. Emerging markets may experience lower liquidity (including as a result of securities or bond markets being closed for extended periods), potential for political unrest leading to recession or war, greater potential for sanctions to be imposed on the country or its citizens, companies or institutions, increased likelihood of sovereign intervention (including default and currency intervention), currency volatility, and increased legal risk.

More information on the risks of investing in the Fund is contained in the Product Disclosure Statement, which should be considered before deciding to invest in the Fund.

Investing in the Fund

The Walter Scott Global Equity Fund has two classes of units;

1. **an unquoted class** (Walter Scott Global Equity Fund). Investors can apply for units in the unquoted class by sending an application form to Macquarie
2. **a quoted class** (Macquarie Walter Scott Global Equity Active ETF). Investors can buy units in the quoted unit class on the ASX using the ASX ticker: **MQWS**

There is a separate product disclosure statement for each class of units in the Fund, which should be considered before deciding to invest in the Fund. For more information, please visit macquarie.com/mam/pds

For more information, call us on 1800 814 523,
email mam.clientservice@macquarie.com or visit macquarie.com/mam

Important information

The Fund(s) mentioned above may have multiple classes of units on issue. A separate class of units is not a separate managed investment scheme.

This information has been prepared by Macquarie Investment Management Australia Limited (ABN 55 092 552 611 AFSL 238321) the issuer and responsible entity of the Fund(s) referred to above. This is general information only and does not take account of investment objectives, financial situation or needs of any person and before acting on this information, you should consider whether this information is appropriate for you. In deciding whether to acquire or continue to hold an investment in a Fund, an investor should consider the product disclosure statement for the relevant class of units in a Fund, if any, and the Website Disclosure Information available at macquarie.com/mam or by contacting us on 1800 814 523.

Past performance information is for illustrative purposes only and is not a reliable indicator of future performance. Current performance information for each class of units in the Fund(s) is available on our website at macquarie.com/mam/au-performance.

Other than Macquarie Bank Limited ABN 46 008 583 542 ("Macquarie Bank"), any Macquarie Group entity noted in this material is not an authorised deposit-taking institution for the purposes of the Banking Act 1959 (Commonwealth of Australia). The obligations of these other Macquarie Group entities do not represent deposits or other liabilities of Macquarie Bank. Macquarie Bank does not guarantee or otherwise provide assurance in respect of the obligations of these other Macquarie Group entities. In addition, if this document relates to an investment, (a) the investor is subject to investment risk including possible delays in repayment and loss of income and principal invested and (b) none of Macquarie Bank or any other Macquarie Group entity guarantees any particular rate of return on or the performance of the investment, nor do they guarantee repayment of capital in respect of the investment.